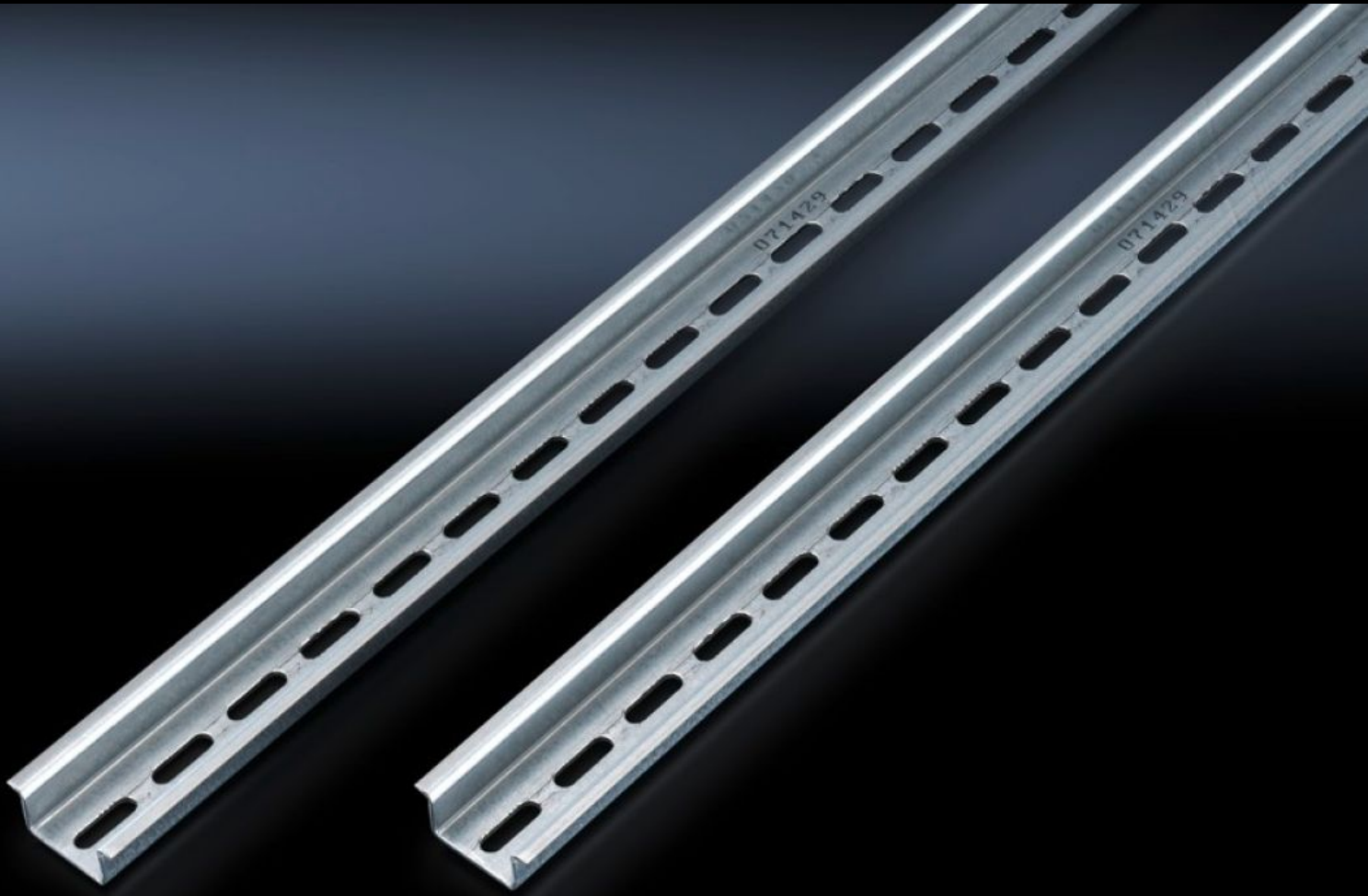


# Rittal – The System.

Faster – better – everywhere.



## SZ 2313.150 Support rail

State: 9/16/2022 (Source: [rittal.com/us-en](http://rittal.com/us-en))

ENCLOSURES

POWER DISTRIBUTION

CLIMATE CONTROL

IT INFRASTRUCTURE

SOFTWARE & SERVICES

FRIEDHELM LOH GROUP



# SZ 2313.150 - Support rail to EN 60 715

For snapping on terminals or other components using latching technology as per EN 60 715.

## Features

Model No.	SZ 2313.150
Version	TS 35/15
Product description	For snapping on terminals or other components using latching technology as per EN 60 715.
Material	Carbon steel
Surface finish	Zinc-plated
Length of support rail	2 m
Packaging unit	6 pc(s).
Weight/packaging unit	7.53 kg 16.6 lb.
Copper weight (kg per piece)	0
Customs tariff number	73269098
EAN	4028177020986
ETIM 7.0	EC001285
ECLASS 8.0	27189234

## Approvals

Approvals	GOST
-----------	------